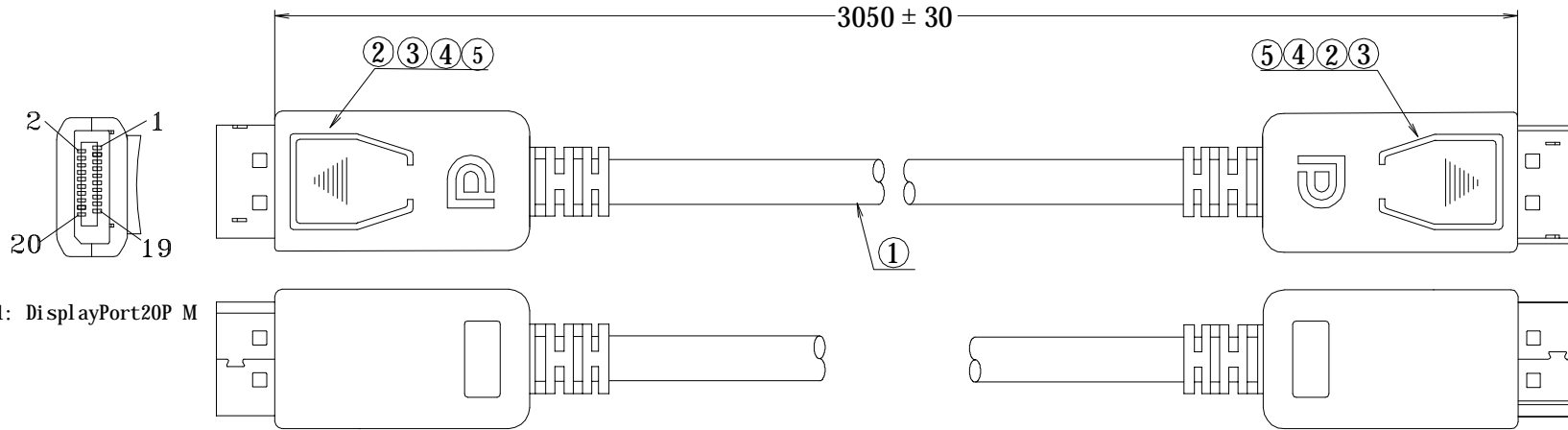


NOTE:ALL MATERIAL COMPLIANT ROHS STANDARD

REVISION INFORMATION

Rev.	Rev.Date	Modified By	Brief Description



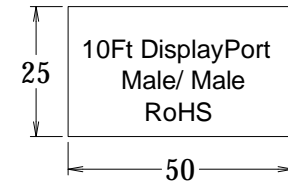
3. Electricity Test:

- A. Voltage: DC 300V/10ms
- B. Insulation Resistance:  $\geq 20M\Omega$
- C. Conduct Resistance:  $\leq 2\Omega$

2. Pin Assignment:

CONN1	CONN2	CONN1	CONN2
10	3 White	10	3 White
12	1 Brown	12	1 Brown
11	2 Ground	11	2 Ground
15	15 White	15	15 White
17	17 Black	17	17 Black
16	16 Ground	16	16 Ground
13	13 White	13	13 White
14	14 Red	14	14 Red
18	18 Yellow	18	18 Yellow
19	19 Orange	19	19 Orange
G	G Ground	G	G Ground

Sticker:



⑧	0510000434	48×40×20cm(RoHS)	1/60	Box
⑦	0480TQ1512	7"×10"(RoHS)	1	PC
⑥	0480TQ1518	15"×17"(RoHS)	1/10	PC
⑤	0410001002	45P Black	4.5	g
④	0410TQ1001	Transparent PE	3	g
③	0450001052	ABS CASE BLK (RoHS)	2	Set
②	0210000032	Displayport (M) Golden Plated(RoHS)	2	Set
①	0131001039	UL20276{ [30#(7/0. 1TA)*1P+D(7/0. 1TA)+AL+M]*5C+30#(7/0. 1TA)*4C+Cotton Thread}+M+AL+D(7/0. 127TA)+B(85% AL B)OD: 6.0 Blk L=3050 (RoHS)	1	PC
No.	PART NAME	SPECIFICATION DESCRIPTION	QTY	UNIT

DRAWN BY	DATE: 2012/7/5	DESCRIPTION: Displayport M/Displayport M
CHECKED BY	SHEET 1 of 1	DP-XXF-MM
APPROVED BY	SCALE 1:1	REv.00    UNIT:mm