

4P USB 'A' TYPE MALE

4P USB 'A' TYPE FEMALE

WIRE CONNECTION

P1	WIRE COLOR	P2
1	RED	1
2	WHITE	2
3	GREEN	3
4	BLACK	4
SHELL	SHIELD	SHELL

DESCRIPTION:

1. 100% OPEN, SHORT, WRONG LINE TEST.
2. INSULATION RESISTANCE: 10MΩ MIN
3. CONDUCTION IMPEDANCE: 1Ω MAX
4. TEST VOLTAGE: 150 VDC
5. FINISHED WITHIN THE TOLERANCE OF THE DIMENSIONS REQUIRED
6. WIRE SURFACE DAMAGE
7. MINIMUM STORAGE TEMPERATURE: -20°C ~ +70°C
8. MINIMUM OPERATING TEMPERATURE: 10°C ~ +40°C
9. INSERTION/EXTRACTION CYCLES: 5,000

NOTE:

1. WIRE L=1830 ± 5MM, CAT OUTSIDE JACKET : L=12 ± 2MM
2. P1,P2 CAT INSULATION : L=9 ± 2MM

05	PVC	45P BLACK PVC	20g
04	PE	LD-PE	6g
03	CONN	4P USB "A" FEMALE, PINS:G/F,SHELL:MATER OF SHELL:STAINLESS STEEL PLASTIC WHITE	1SET
02	CONN	4P USB "A" MALE, PINS:G/F, SHEEL:SPCC PLASTIC WHITE	1SET
01	CABLE	USB2.0 UL2725 1P/28#+2C/26#+AEB+-JACKET : BLACK PVC OD:4.0mm RoHS	1PCS
NO.	P/N	DESCRIPTION	QTY



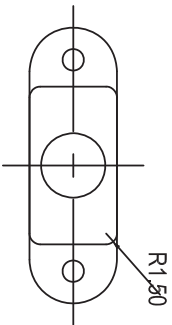
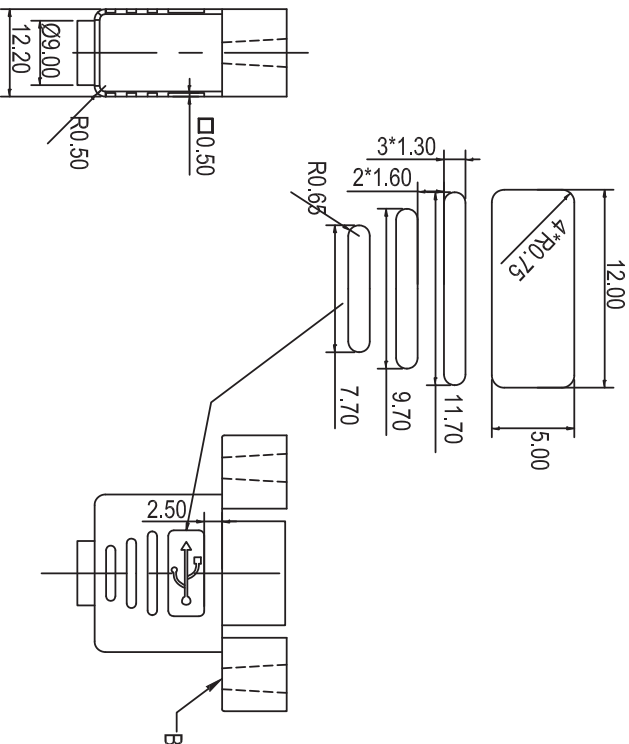
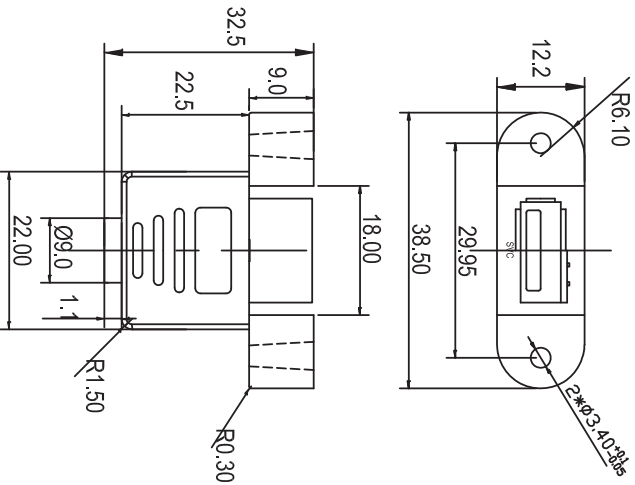
Research Develop Innovate

RD1, Inc. 333 North Bedford Road, Suite 135, Mount Kisco, NY 10549

ECN#	DATE	SYM	REVISION RECORD
14-060	06/06/14	B	CHANGED DIMENSION OF THE OVER MOLD FROM 29.2 TO 32.5MM
11-120	6/29	A	Added dimensions for holes in overmold

SCALE	TITLE	DR.	DATE	REF.	P/N	MCA-1830CPARAP-NL	SHEET
N/A	USB 2.0 cable assembly, 4P plug, 4P receptacle, RoHS Compliant	AMS	06/09/11				1 OF 2
TOLERANCE EXCEPT AS NOTED		CK.	BM	PRE-	DRAWING NO.	4102	REV. B
DEC. DIMENSION					SIZE		
X ±0.30							
.XX ±0.10							
.XXX ±0.05							
ANG.	N/A						

THIS DOCUMENT IS OWNED BY, AND THE INFORMATION CONTAINED IN IT IS PROPRIETARY TO, RD1. BY RECEIPT HEREOF THE HOLDER AGREES NOT TO USE THE INFORMATION AND NOT TO DISCLOSE IT TO ANY THIRD PARTY. NOR REPRODUCE THIS DOCUMENT WITHOUT THE WRITTEN CONSENT OF RD1. AND AGREES TO RETURN THIS DOCUMENT UPON REQUEST.



NOTE: ALL DIMS ARE GIVEN IN MM

PROJECTION

SCALE: N/A

TOLERANCE: EXCEPT AS NOTED

DEC. DIMENSION: X ±0.30, XX ±0.10, XXX ±0.05, ANG. N/A

TITLE: USB 2.0 cable assembly, 4P plug, 4P receptacle- RoHS Compliant

RDI Research Develop Innovate

RDI, Inc. 333 North Bedford Road, Suite 135, Mount Kisco, NY 10549

14-060	06/06/14	B	CHANGED DIMENSION OF THE OVER MOLD FROM 29.2 TO 32.5MM	BC	Tinao
11-120	6/29	A	Added dimensions for holes in overmold	BM	LZ
ECN#	DATE	SYM	REVISION RECORD	AUTH	BY

DR.	DATE	REF.	SHEET
AM/S	06/09/11	P/N: MCA-1830CPARAP-NL	2 OF 2
CK.	PRE-	DRAWING NO. 4102	REV. B
BM	CB	SIZE F	

THIS DOCUMENT IS OWNED BY, AND THE INFORMATION CONTAINED IN IT IS PROPRIETARY TO, RDI. BY RECEIPT HEREOF THE HOLDER AGREES NOT TO USE THE INFORMATION AND NOT TO DISCLOSE IT TO ANY THIRD PARTY. NO REPRODUCE THIS DOCUMENT WITHOUT THE WRITTEN CONSENT OF RDI, AND AGREES TO RETURN THIS DOCUMENT FORTHWITH UPON REQUEST.