

# Click™ Connectors: A key component of the Universal WorkBench™

Spend less time figuring out how to mount components and more time connecting and programming.

## Less Frustration. More Innovation.

Now you can focus on innovation, education, or simply have fun with electronics! Once mounted on a Click, your electronics can be arranged and organized on a Phase Dock WorkBench™ in seconds. Whether you want security, portability or good looks, the WorkBench gives you confidence in your build and pride in the results.

## Specifications

Item	Part Number	Pkg Qty	Mounting Platform ABS 3D-printed
1x2 Click	10117	2	1.56" x 2.38" (40mm x 60.40mm)
1x3 Click	10118	2	1.56" x 3.35" (40mm x 85.4mm)
1x4 Click	10119	2	1.56" x 4.35" (40mm x 110.4mm)
2x2 Click	10113	2	2.53" x 2.38" (64.33mm x 60.40mm)
2x3 Click	10114	2	2.53" x 3.35" (64.33mm x 85.4mm)
2x4 Click	10115	1	2.53" x 4.35" (64.33mm x 110.4mm)
2x5 Click	10116	1	2.53" x 5.31" (64.33mm x 135mm)
3x4 Click	10120	1	3.50" x 4.35" (89mm x 110.4mm)

Use Clicks with any Universal WorkBench base or platform.

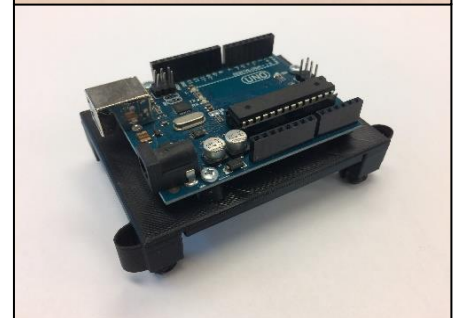
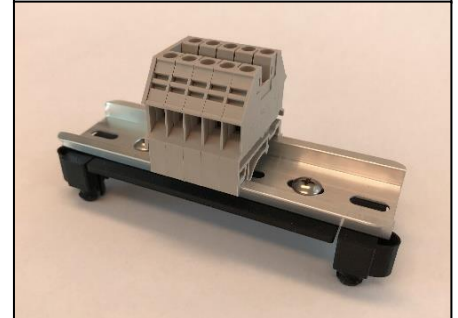
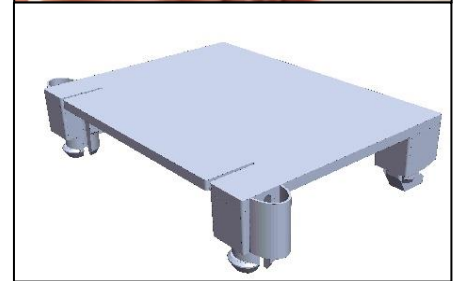
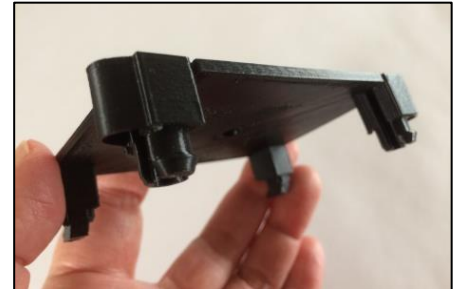
## Electronics Mounting Guide

No matter what electronic component you use, there is a way to mount it.

Download the Electronics Mounting Guide eBook at <https://www.phasedock.com/electronics-mounting-guide>

"All I want to say is...as a person that has been prototyping for 35+ years, *this is the best setup I have ever worked with.*  
Thank you."

— LEWIS T., SAN ANTONIO, TX



Electronics not included.