

Heartland™ Series

POLYCARBONATE ENCLOSURES

The most innovative, durable and reliable polycarbonate enclosures available!



attabox.com

 **AttaBox**
A ROBROY ENCLOSURES® BRAND



AttaBox® Innovative Key Features



Industrial Control Enclosure

One box, one solution, hinged and screw cover type

Full non-metallic hinge, does not penetrate enclosure

Broadest size range: 6" x 6" to 24" x 24"

* Multi-direction mounting feet (included)

Clear and opaque cover styles available

Thick, robust sidewall and base construction prevents flexing of walls

Integrated locking clasp

Built-in DIN Rail mounting embosses in back

Easy to remove door

Full non-metallic or stainless steel cover latches

T-nut and channel allows for infinite adjustment of panels



 Industrial Control Panel Enclosure

Available Modifications:

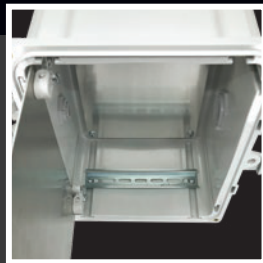
- Custom Holes/Cutouts
- Silk Screening/Digital Printing
- Custom Colors

Neoprene rope style gasket (Poured polyurethane seamless gasket on select sizes)



UL 94 Flame Rating – 5VA

- Heartland™ Enclosures provide the highest (most flame retardent) UL 94 rating available.



Side Mount Solutions

- Increases usable space
- Provides more mounting options
 - DIN Rails
 - Side Panels
 - Equipment



Panel Systems

- Sub-panel mounting solution
 - Revolutionary design
 - Variable height mounting
 - Swings open from any side
 - Panel locks into open position
 - Mounting holes are standard JIC

Why AttaBox® Heartland™ Enclosures?



AttaBox® Heartland™ Enclosures are designed to be used in a variety of indoor or outdoor applications. They provide superior protection against rain, sleet, snow, splashing water, hose directed water, submersion, sun/uv and flame protection.

Superior Protection Against:



RAIN, SLEET
& SNOW



SPLASHING &
HOSE DIRECTED
WATER



SUBMERSION



SUN/UV



FLAMES

INNOVATIONS & FEATURES:

- One Enclosure, One Solution, One Price! Enclosure can be configured as screw cover or hinged cover
- Fully nonmetallic hinge, does not penetrate inside enclosure
- Thick, robust side wall construction eliminates side wall flexing
- Built in DIN Rail mounting embosses in the back of the enclosure
- Capability to side mount of enclosure panel, DIN or instruments
- Sliding T-Nut allows for infinite panel adjustment back to front
- Latch options – fully non-metallic or stainless steel (see Accessories)
- Clear or Opaque cover options
- Multi-directional mounting feet allow mounting flexibility
- Aluminum back panel and swing out panel mounting options
- Industry leading size range: 6" x 6" to 24" x 24"

MATERIALS & PERFORMANCE:

Performance: -40°F to +248°F. In general, the product performance will not be adversely affected until temperatures below -40°F are realized. At temperatures below this level, stress, tension, and pressure could start to impact the enclosure's reliability. This includes the latching, opening and/or incidental impacts. In the absence of these potential threats, the enclosures should remain unaffected by the low temperatures. Upon return of temperatures above -40°F, performance reliability should return to normal. We document a normal operating temperature of -40°F to +248°F (-40°C to +120°C). We do this to provide a safe operating range, as product application and enclosure placement is determined by the end user, not by AttaBox. End-use testing of specific applications and enclosure placements are key to determining the application specific limits.

- UL 94 Flame Rating – 5VA (highest flame resistance)
- UL's best rating, an "f1" per UL 746C (resin has passed tests for UV exposure and water immersion)

RATINGS & LISTINGS:

- cULus Listed per file #E319779
- UL50, UL50e, UL508A
- Type 1, 3R, 4, 4X, 12
- IEC 60529: UL Listed per file #E362920 IP66

Enclosures & Aluminum Panels

HEARTLAND™ ENCLOSURE WITH
NON-METALLIC LATCHES



HEARTLAND™ ENCLOSURE WITH
STAINLESS STEEL LATCHES



SWING PANEL KIT



NEW
PRODUCT

Heartland™ Enclosure with
Non-Metallic Latches

Heartland™ Enclosure with
Stainless Steel Latches

Aluminum Panels

	SIZE	OPAQUE COVER PART #	CLEAR COVER PART #	OPAQUE COVER PART #	CLEAR COVER PART #	SIZE	BACK PANEL PART #	SWING KIT PART #
	6 X 6 X 4	AH664	AH664C	AH664SS	AH664CSS	6 X 6	BP66A	AH66SPK
	8 X 6 X 4	AH864	AH864C	AH864SS	AH864CSS	8 X 6	BP86A	AH86SPK
NEW	8 X 8 X 4	AH884	AH884C	AH884SS	AH884CSS	8 X 8	BP88A	AH88SPK
	10 X 8 X 4	AH1084	AH1084C	AH1084SS	AH1084CSS	10 X 8	BP108A	AH108SPK
NEW	10 X 8 X 6	AH1086	AH1086C	AH1086SS	AH1086CSS	10 X 8	BP108A	AH108SPK
NEW	10 X 10 X 6	AH10106	AH10106C	AH10106SS	AH10106CSS	10 X 10	BP1010A	AH1010SPK
	12 X 10 X 6	AH12106	AH12106C	AH12106SS	AH12106CSS	12 X 10	BP1210A	AH1210SPK
	14 X 12 X 6	AH14126	AH14126C	AH14126SS	AH14126CSS	14 X 12	BP1412A	AH1412SPK
	16 X 14 X 8	AH16148	AH16148C	AH16148SS	AH16148CSS	16 X 14	BP1614A	AH1614SPK
NEW	18 X 16 X 4	AH18164	AH18164C	AH16148SS	AH18164CSS	18 X 16	BP1816A	AH1816SPK
	18 X 16 X 10	AH181610	AH181610C	AH181610SS	AH181610CSS	18 X 16	BP1816A	AH1816SPK
NEW	20 X 16 X 8	AH20168	AH20168C	AH20168SS	AH20168CSS	20 X 16	BP2016A	AH2016SPK
	24 X 24 X 10	AH242410	AH242410C	AH242410SS	AH242410CSS	24 X 24	BP2424A	AH2424SPK

DIN Rail Kits & Accessories

DRK DIN Rails

Kit includes DIN rail that fits size indicated, plus two custom slot nuts and two screws for mounting to enclosure.

CATALOG #	FITS
AH6DRK	6"
AH8DRK	8"
AH10DRK	10"
AH12DRK	12"
AH14DRK	14"
AH16DRK	16"
AH18DRK	18"
AH20DRK	20"
AH24DRK	24"

DR DIN Rails

Kit includes a DIN rail that fits size indicated, plus two trilobular screws for mounting to back of enclosure.

CATALOG #	FITS
AH6DR	6"
AH8DR	8"
AH10DR	10"
AH12DR	12"
AH14DR	14"
AH16DR	16"
AH18DR	18"
AH20DR	20"
AH24DR	24"

DIN RAIL WITH 2 CUSTOM SLOT NUTS AND SCREWS – AH__ DRK



DIN RAIL WITH 2 SCREWS – AH__ DR



POLYCARBONATE REPLACEMENT LATCH KIT



SS REPLACEMENT LATCH KIT



POLYCARBONATE VENT



SWING PANEL MOUNTS – AHSPM



ACCESSORY KIT – AHAK



SLOT NUT KIT – AHSNK



Accessories

CATALOG #	DESCRIPTION	PIECES INCLUDED
AHSNK	Slot Nut Kit	Two nuts & two screws
AHSPM	Swing Panel Mounts	Four per kit
AHLK	Latch Kit – replacement only	Two non-metallic latches per kit
AHAK	Accessory Kit – replacement only	Four mounting feet, cover screws, mounting caps, back panels screws, & washers
NEW AHLKSS	Stainless Steel Latch Kit	Two stainless steel latches per kit
NEW REAH-V60	Small Vent (60mm) UL Listed 3R	Mounting nut
REAH-V80	Small Vent (80mm)	Mounting Nut

Other Polycarbonate Enclosures



Operator Interface Enclosure

PushButton Series

UL File E362920, IP66, IP67, IP68.

CATALOG #	HOLES	HOLE SIZE	OVERALL H X W X D
COPC1PB	1	30mm	4.34 x 3.16 x 2.79
COPC2PB	2	30mm	5.12 x 3.16 x 3.54
COPC1PB22	1	22mm	4.34 x 3.16 x 2.79
COPC2PB22	2	22mm	5.12 x 3.16 x 3.54



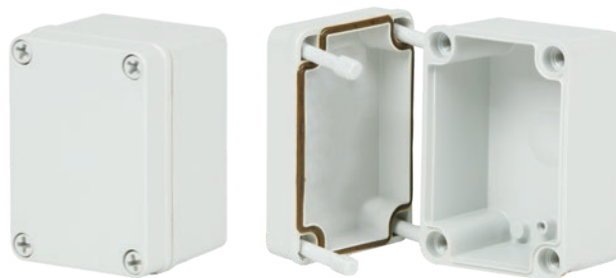
Junction Style Enclosure

Commander™ Series

UL File E362920, IP66, IP67, IP68.

CATALOG #	HOLES	OVERALL H X W X D	INSIDE A X B X C
COPC432	Blank	4.34 x 3.16 x 2.79	3.92 x 2.74 x 2.51
COPC533	Blank	5.12 x 3.16 x 3.54	7.71 x 2.74 x 3.26

All measurements are in inches.



500 Maple Street
Belding, MI 48809

o: 616.794.0700
e: CSR@robroyenclosures.com

attabox.com

MADE IN THE USA